



## 9 Rae Street Birmingham Gardens NSW

3 1 1

This solid, three bedroom weatherboard cottage with adjacent single garage sits forward on a large sloping 695m2 block close to bus stop, University and only 1.5km to Jesmond Central shops and services. Realise the full potential of majestic elevated district views from the dining area & kitchen by adding a deck.

Built circa 1950's, ceilings are high and floorboards extend throughout although 2 bedrooms have been carpeted over. On entry the short hall leads directly into the generous lounge with adjoining north facing sunroom. The main bedroom with ceiling fan also faces north and looks out to the neat front yard.

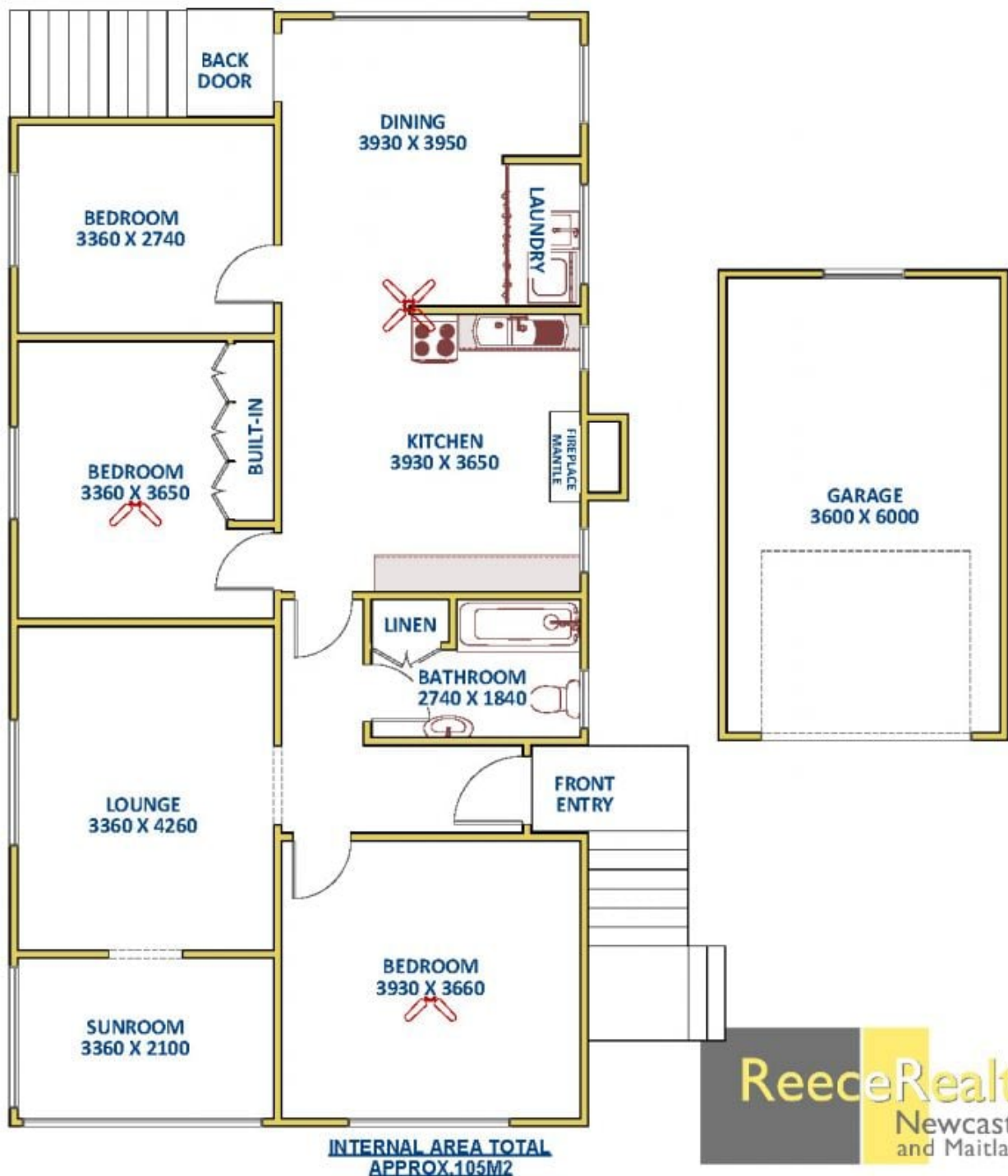
Walking to the sizeable kitchen and dining space in the rear

[For full version visit the website](https://www.reecerealty.com.au/sale/nsw/newcastle-region/birmingham-gardens/residential/house/8172106)

**Type** : House  
**Price** : \$660,000 to \$700,000  
**Land Size** : 695 sqm  
**View** : <https://www.reecerealty.com.au/sale/nsw/newcastle-region/birmingham-gardens/residential/house/8172106>



**Allen Reece**  
 02 4950 2025



**ReeceRealty**  
Newcastle  
and Maitland

**9 Rae Street,  
BIRMINGHAM GARDENS**

**FLOOR DIAGRAM\*\*NOT TO SCALE\*\***  
This drawing has been prepared for marketing  
purposes. Dimensions are a guide only.