



11 Croft Road Eleebana NSW

5 3 1

This recently re-painted 5-bedroom entertainers home, is in a very highly sought after location, capped off with the most stunning panoramic views of Lake Macquarie!

The top floor is recently renovated, with those views provided through it's own dedicated living space & bedroom that has a walk in wardrobe, split system air conditioning & modern ensuite. The ensuite features a stunning bath, shower, W/C finished off with a his and hers vanity. The top floor living space featuring a beautiful new gas fireplace, opens to a large balcony, with an outdoor spa also available to help take in the best views that Eleebana has to offer!

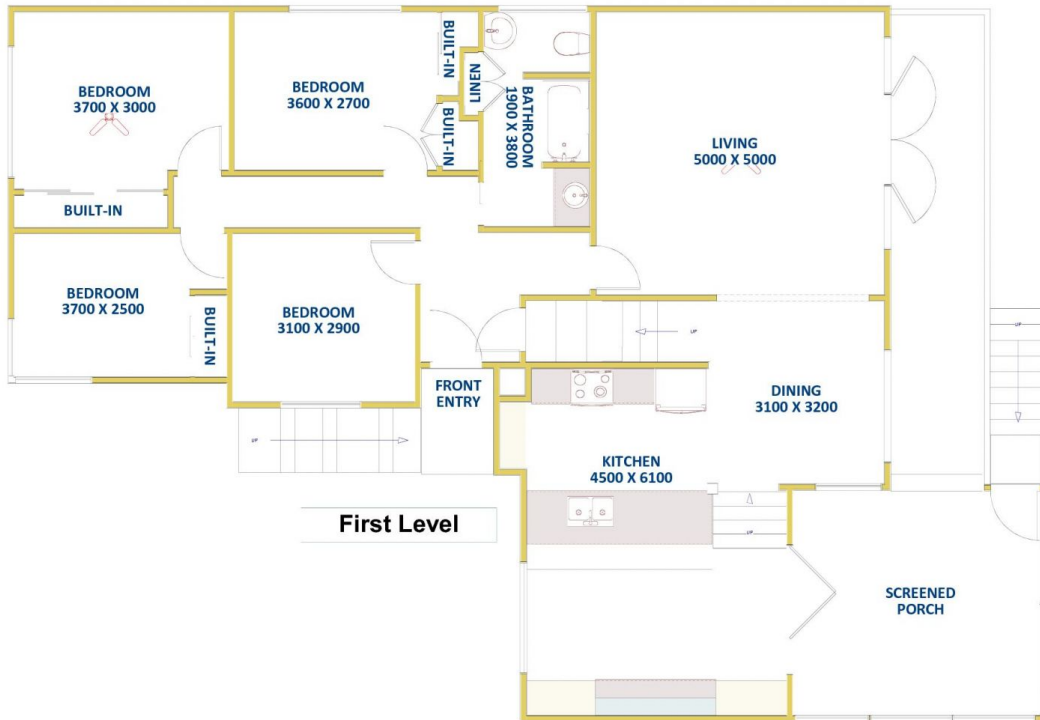
The main floor you walk into upon entry to the home is

[For full version visit the website](https://www.reecerealty.com.au/lease/nsw/lake-macquarie-east/eleebana/residential/house/8130811)

Type : House
Price : \$1,200 per week
View : <https://www.reecerealty.com.au/lease/nsw/lake-macquarie-east/eleebana/residential/house/8130811>



Nick Majurovski
 02 4950 2025



ReeceRealty
Newcastle
and Maitland

FLOOR DIAGRAM

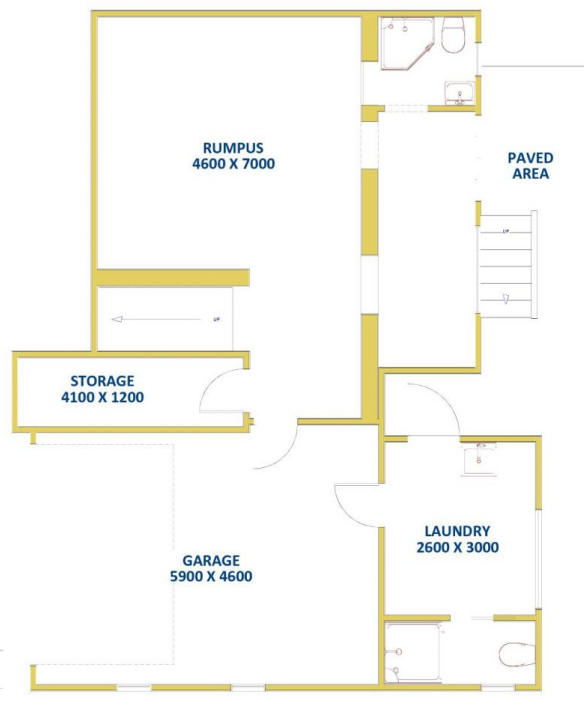
****NOT TO SCALE****

This drawing has been prepared for marketing purposes.

Dimensions are a guide only.

11 Croft Road, ELEEBANA

Lower Ground Level



CUBBY HOUSE
2000 X 3100

SHED
3000 X 1900