



62 Pasedena Crescent Beresfield NSW

5 2 2

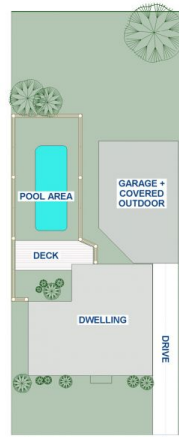
Immediately livable with major renovations to kitchen and upstairs living, this five bedroom, two bathroom home offers everything required for comfortable family living, including parking for two+ vehicles, with scope for personalisation if desired. Reverse cycle air conditioning downstairs, ducted a/c upstairs, inground pool and covered outdoor area provide respite from Aussie summers and a sleek combustion fire covers winter. An array of solar panels reduces energy expenses.

Your introduction into the home is the I-shaped lounge and dining room featuring timber floorboards, reverse cycle air conditioning and new combustion fire. From the dining area is a glossy modern white and sky blue kitchen including wall oven with separate grill, double fridge space with fridge included and plentiful storage and benches. Walk through to the sunroom at the rear with views over the pool and

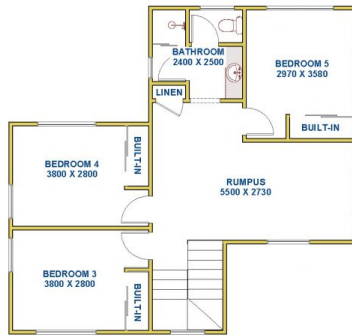
Price : \$660,000 - \$720,000
Land Size : 620 sqm
View : <https://www.reecerealty.com.au/sale/nsw/hunter-valley-lower/beresfield/residential/house/8118715>



Allen Reece
02 4950 2025

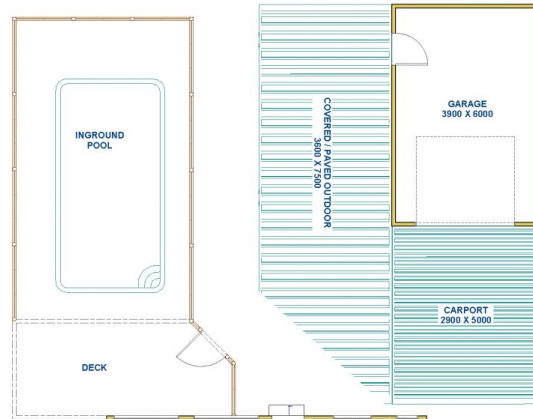


Site map



First Level

LIVING AREA
APPROX. 67M²



Ground Level

LIVING AREA
APPROX. 100M²



62 Pasadena Crescent,
BERESFIELD

FLOOR DIAGRAM

NOT TO SCALE

This drawing has been prepared for marketing purposes. Dimensions are a guide only.