

## 2/359 Pacific Highway Highfields NSW

1 1 1

This one-bedroom flat, located in prime position, has everything you need for quiet, convenient living.

A recently refreshed kitchen, with a provided fridge, dedicated microwave space and a portable stove/oven system. The kitchen opens up to a front deck, with beautiful views.

The open-plan kitchen area opens up via a stunning archway, into the spacious bedroom & living studio area fitted with new timber flooring and a large classical window to bring in all that natural sunlight.

A modern recently re-done bathroom with shower and separate toilet is available. A European-style laundry is

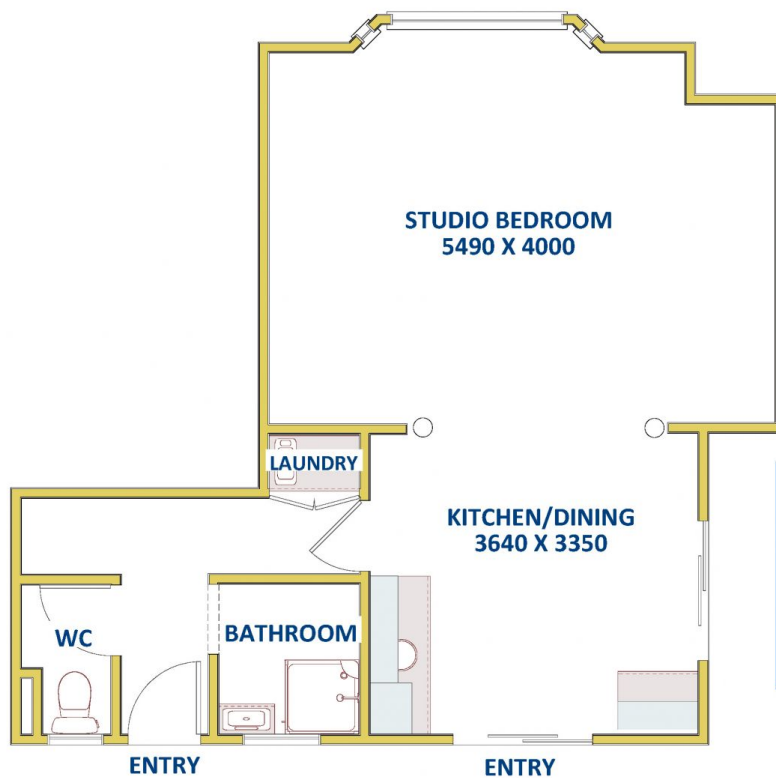
**Type** : Villa

**View** : <https://www.reecerealty.com.au/lease/nsw/newcastle-region/highfields/residential/villa/8044935>



**Nick Majurovski**  
02 4950 2025

[For full version visit the website](https://www.reecerealty.com.au)



**FLOOR DIAGRAM**

**\*\*NOT TO SCALE\*\***

This drawing has been prepared  
for marketing purposes.  
Dimensions are  
a guide only.

**TOTAL LIVING AREA**  
**APPROX 47 SQM**

**Unit 2/359 Pacific Highway,  
HIGHFIELDS**

**ReeceRealty**  
Newcastle  
and Maitland