



2/29 Brooks Street Wallsend NSW

2 1 1

This modern townhouse, situated on a block of 4, has had no expense spared with quality fittings and fixtures throughout. The townhouse has two levels with a large open plan living, dining and kitchen which has beautiful stainless appliances, dishwasher and gas cooking featured on the ground floor.

On the upper level there is the two bedrooms which are spacious and include built in wardrobes. The main bathroom has a separate bath and shower, with modern vanity.

Glass sliding doors open to a beautiful rear timber deck that provides access to the courtyard. The unit includes single garage with internal access to the property.

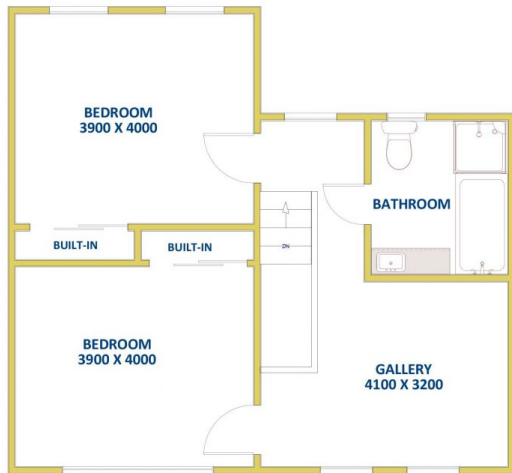
Type : Townhouse

View : <https://www.reecerealty.com.au/lease/nsw/newcastle-region/wallsend/residential/townhouse/7864248>

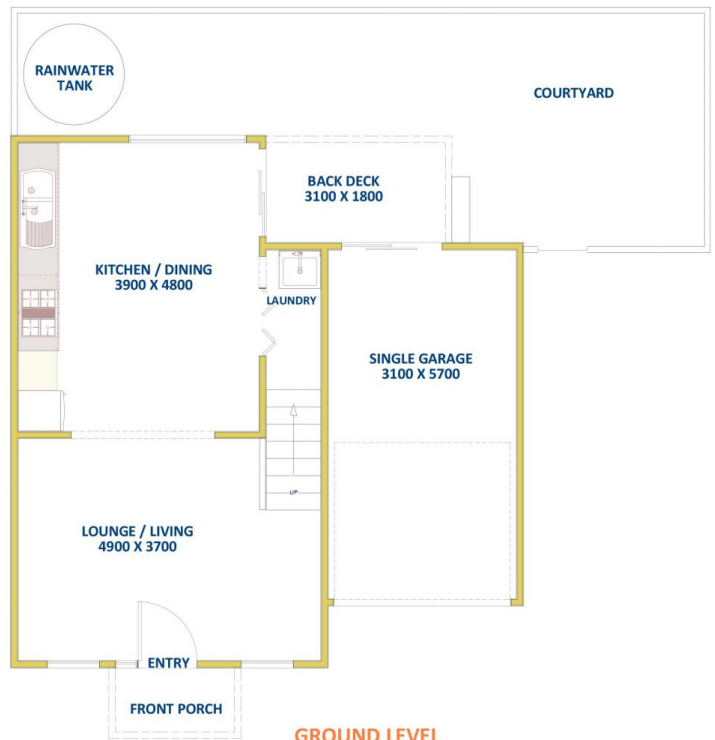


Nick Majurovski
02 4950 2025

[For full version visit the website](https://www.reecerealty.com.au)



FIRST LEVEL



GROUND LEVEL

**2 / 29 Brooks Street,
WALLSEND**

DISCLAIMER: Measurements are approximate for illustration purposes and are to be used only as a guide.