



47 Mary Street Jesmond NSW

6 2 2

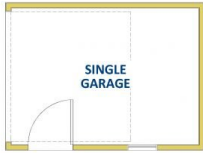
This six bedroom home on a 607m2 corner block has many features to offer the extended family or investor alike. A comfortable walk to Jesmond Shops, parks, public transport and schools including Jesmond Public, Callaghan College and Newcastle University, the home is ideal for all types of needs.

An entry hall leads you to four bedrooms with built-in robes & ceiling fans, the main bathroom and central kitchen. The roomy bathroom has a shower and vanity and the W/C is separate. Walk through your kitchen, including loads of cupboard space, centre island bench and stainless steel gas stove, into the spacious family sized living/dining room with ceiling fans & views to the retained back lawn. Off the living room are two bedrooms with built-ins and ceiling fans, one of which would suit office or teenage retreat as it has external access from the paved entertaining area.

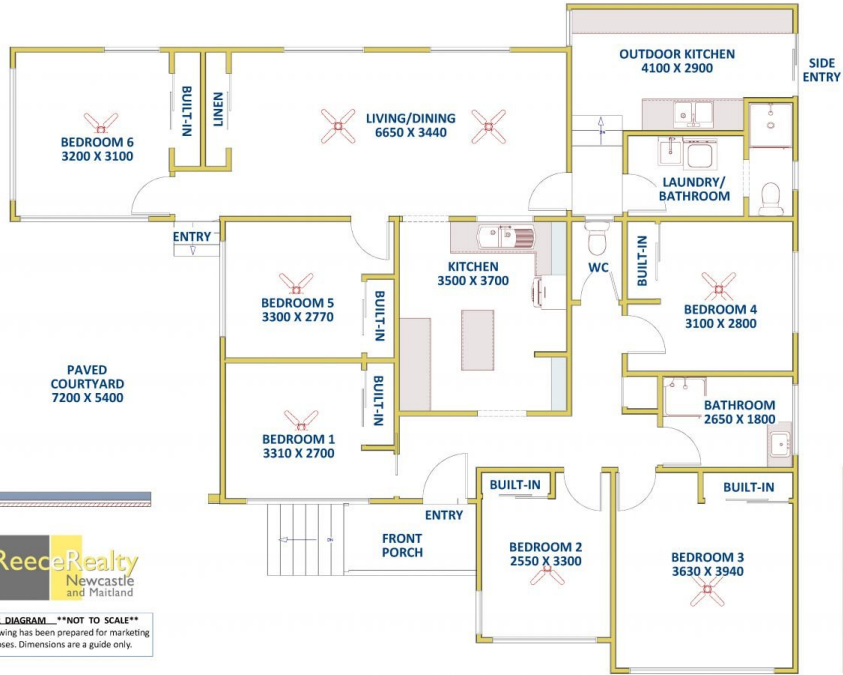
Land Size : 607 sqm
View : <https://www.reecerealty.com.au/sale/nsw/newcastle-region/jesmond/residential/house/7597689>



Allen Reece
02 4950 2025



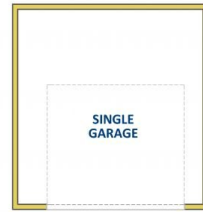
RALPH STREET



FLOOR DIAGRAM... **NOT TO SCALE**
 This drawing has been prepared for marketing purposes. Dimensions are a guide only.

47 Mary Street, JESMOND

MARY STREET



LOWER LEVEL