



## 1/4 Shereline Avenue Jesmond NSW

2 1 1

This cosy 2-bedroom unit is uniquely located on a quiet and open street with quick and easy access to nearby shopping centers, schools, the university, and public transport.

The two bedrooms come with built-in wardrobes offering ample space for storage. There are even more storage options in the hallway with a third built-in wardrobe!

The tidy bathroom comes with a shower and toilet. The well-spaced lounge area separated from the kitchen by a peninsula bench will also make a great space for entertaining or even just keeping an eye on your favourite show while you cook.

The kitchen comes with ample bench room and a gas stove

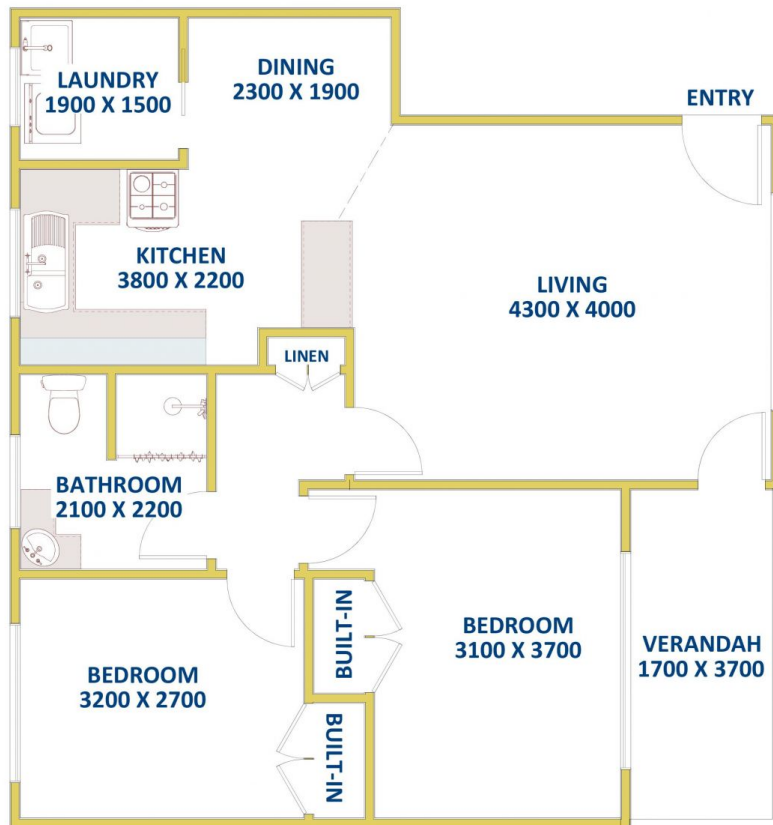
**Type** : Unit

**View** : <https://www.reecerealty.com.au/lease/nsw/newcastle-region/jesmond/residential/unit/7512374>



**Melissa Reece**  
02 4950 2025

[For full version visit the website](https://www.reecerealty.com.au)



DISCLAIMER: Measurements are approximate for illustration purposes and are to be used only as a guide

**1/4 Shereline Avenue, JESMOND**