



49 Wilkinson Avenue Birmingham Gardens NSW

5 2

This well maintained large family home packed with features ideal for a growing family.

Featuring large living area, spacious bedrooms with built in robes, open plan, kitchen and living room, with additional lounge room over looking the backyard.

This property also features a large 13kw Solar Panel system, which will help reduce those electricity costs!

Located in walking distance to University, close proximity to shopping centre's, quality local area schools, parks, sporting fields & transport & only 15 - 25 minutes to Newcastle CBD & beaches.

The property is fully furnished and ready to move in.

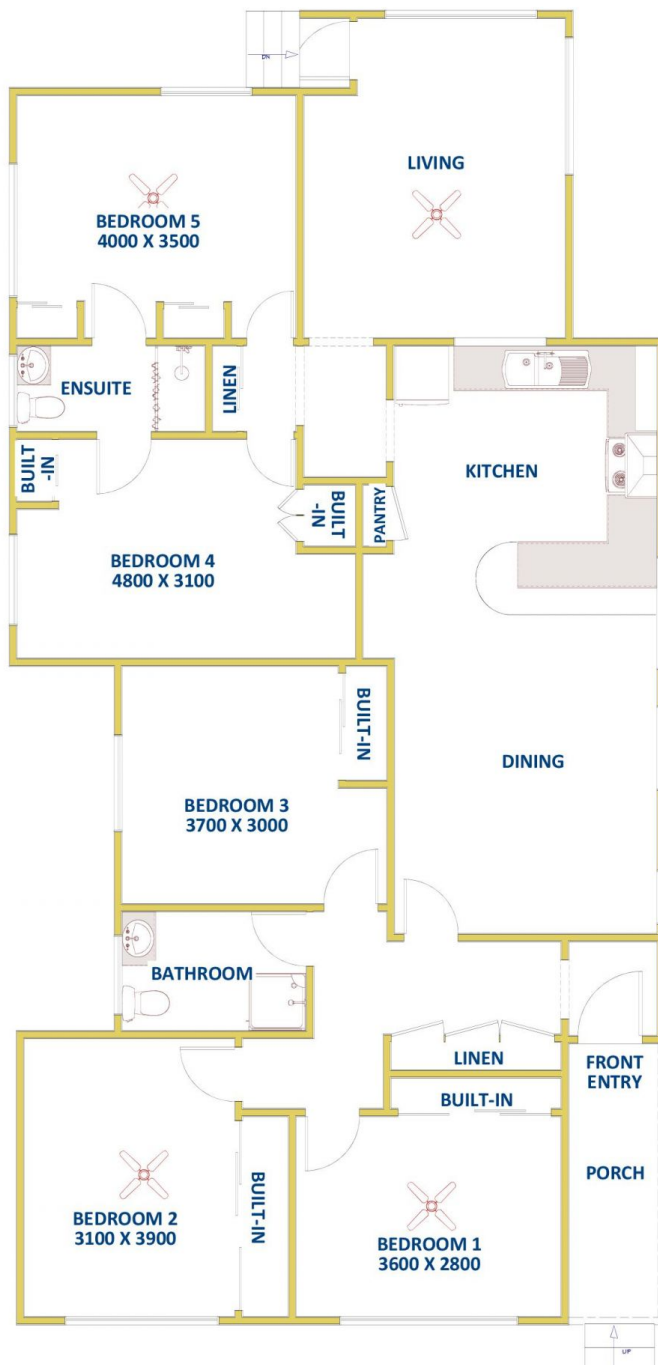
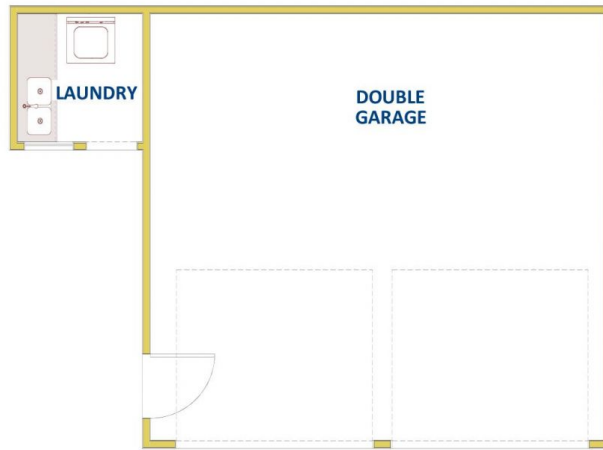
[For full version visit the website](https://www.reecerealty.com.au/lease/nsw/newcastle-region/birmingham-gardens/residential/house/7425130)

Type : House

View : <https://www.reecerealty.com.au/lease/nsw/newcastle-region/birmingham-gardens/residential/house/7425130>



Nick Majurovski
02 4950 2025



DISCLAIMER: Measurements are approximate for illustration purposes and are to be used only as a guide



**49 Wilkinson Avenue,
BIRMINGHAM GARDENS**