



12 Allenwood Close Elmore Vale NSW

5 3 2

Nestled on 1156m2 at the end of a quiet, exclusive cul-de-sac is this 5 bedroom brick and tile manor of grand proportions just waiting for a new family to make it their own. Built by quality builder Mirvac in 1993, it is still held by the same family & boasts zoned ducted air conditioning throughout, newly sanded and finished timber flooring, abundant storage, multiple living spaces, covered alfresco area, inground saltwater pool & so much more. Further recent updates include new carpet and window coverings, freshly painted ceiling with selected new light fittings and refurbished bathrooms.

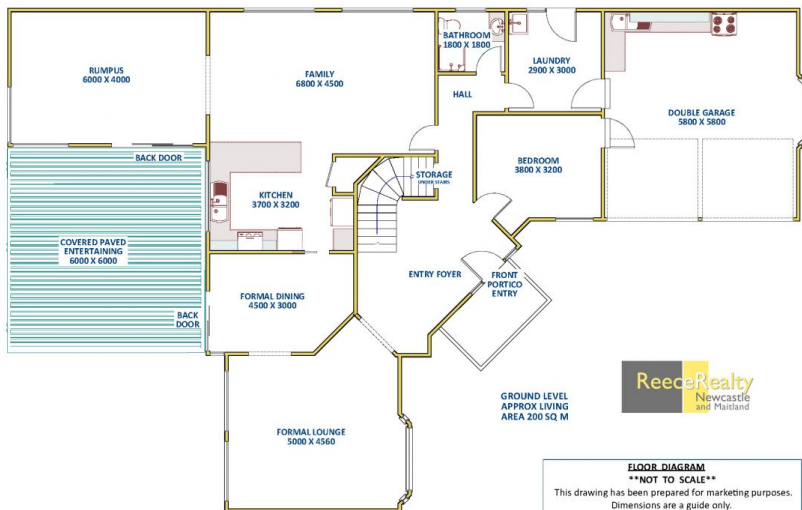
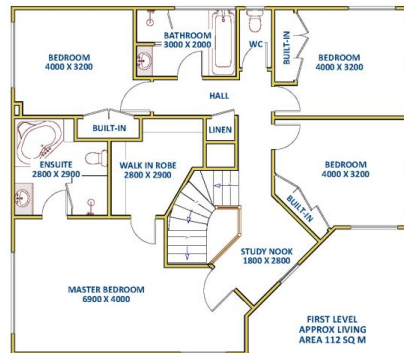
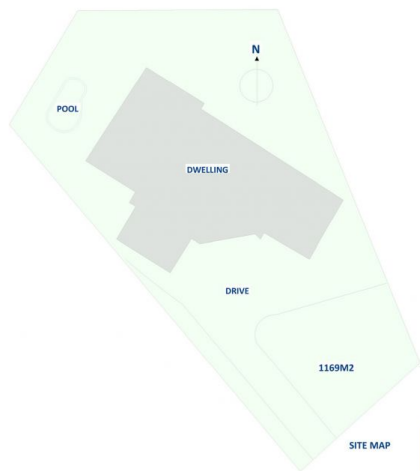
Entry from the covered portico opens to an impressive foyer with carpeted stairwell ahead. Upstairs you will find four of the five bedrooms, a study

[For full version visit the website](https://www.reecerealty.com.au/sale/nsw/newcastle-region/elmore-vale/residential/house/7403138)

Type : House
Land Size : 1156 sqm
View : <https://www.reecerealty.com.au/sale/nsw/newcastle-region/elmore-vale/residential/house/7403138>



Allen Reece
 02 4950 2025



ReeceRealty
Newcastle
and Maitland

FLOOR DIAGRAM
****NOT TO SCALE****
This drawing has been prepared for marketing purposes.
Dimensions are a guide only.

12 Allenwood Close, ELMORE VALE